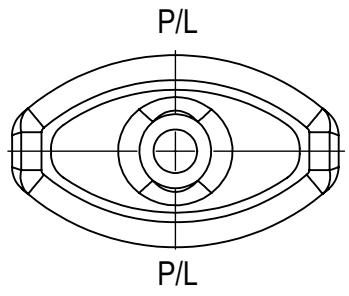



AVAILABLE:

1. SKU#100076, CLEAR
2. SKU#100218, CLEAR UVI

THIS DRAWING CONTAINS PROPRIETARY INFORMATION OF CONSUMERS PACKAGING GROUP INC. NEITHER THIS DRAWING OR ITS CONTENTS MAY BE REPRODUCED IN ANY FORM, FOR ANY PURPOSE, UNLESS WRITTEN CONSENT IS GIVEN BY CONSUMERS PACKAGING INC.



BOTTLE SPECIFICATIONS			
MATERIAL: PETE	FILL CAPACITY:	60ML ± 3ML	
WEIGHT: 9g ± 1g	OVERFLOW CAPACITY:	70ML ± 3.5ML	
 CONSUMERS PACKAGING GROUP INC. TEL: 416-504-5200; FAX: 416-504-0707; sales@consumerspackaging.com		DESCRIPTION:	60ML/2 OZ CONCORD OVAL
		DRAWING NO:	CPG-1087-A-V02-R01
DWN. BY: Y.F.	DATE: 16/10/09		
APR. BY:	DATE:		
SCALE: 1:1			