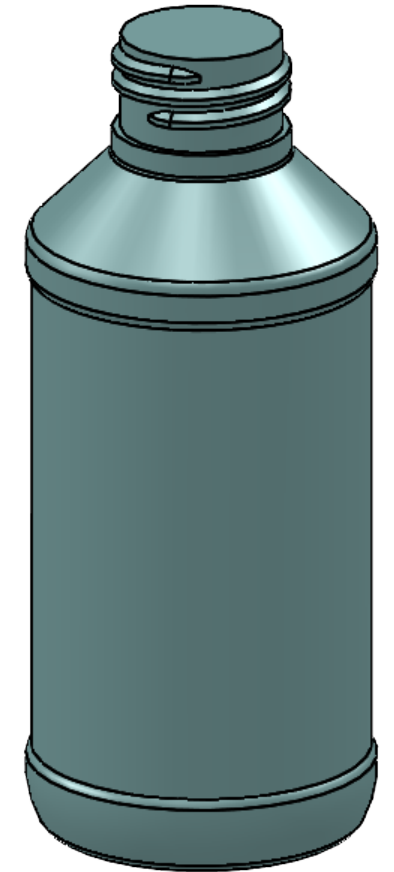
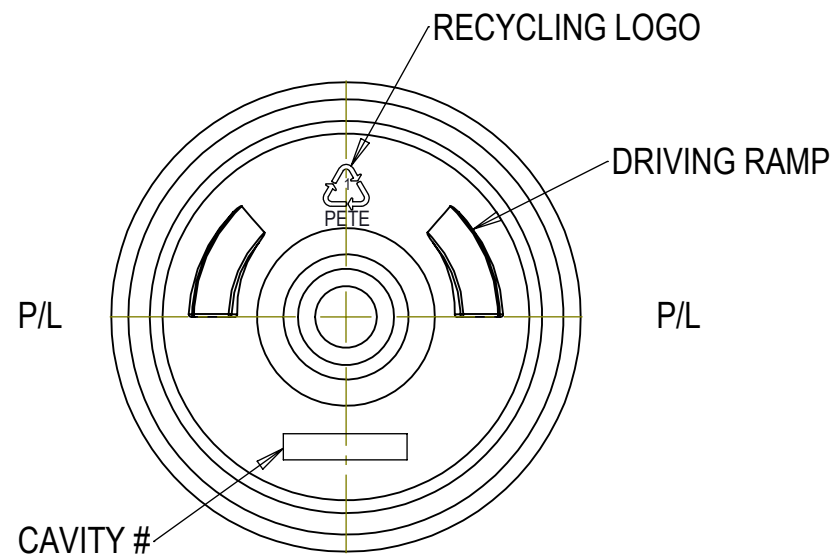
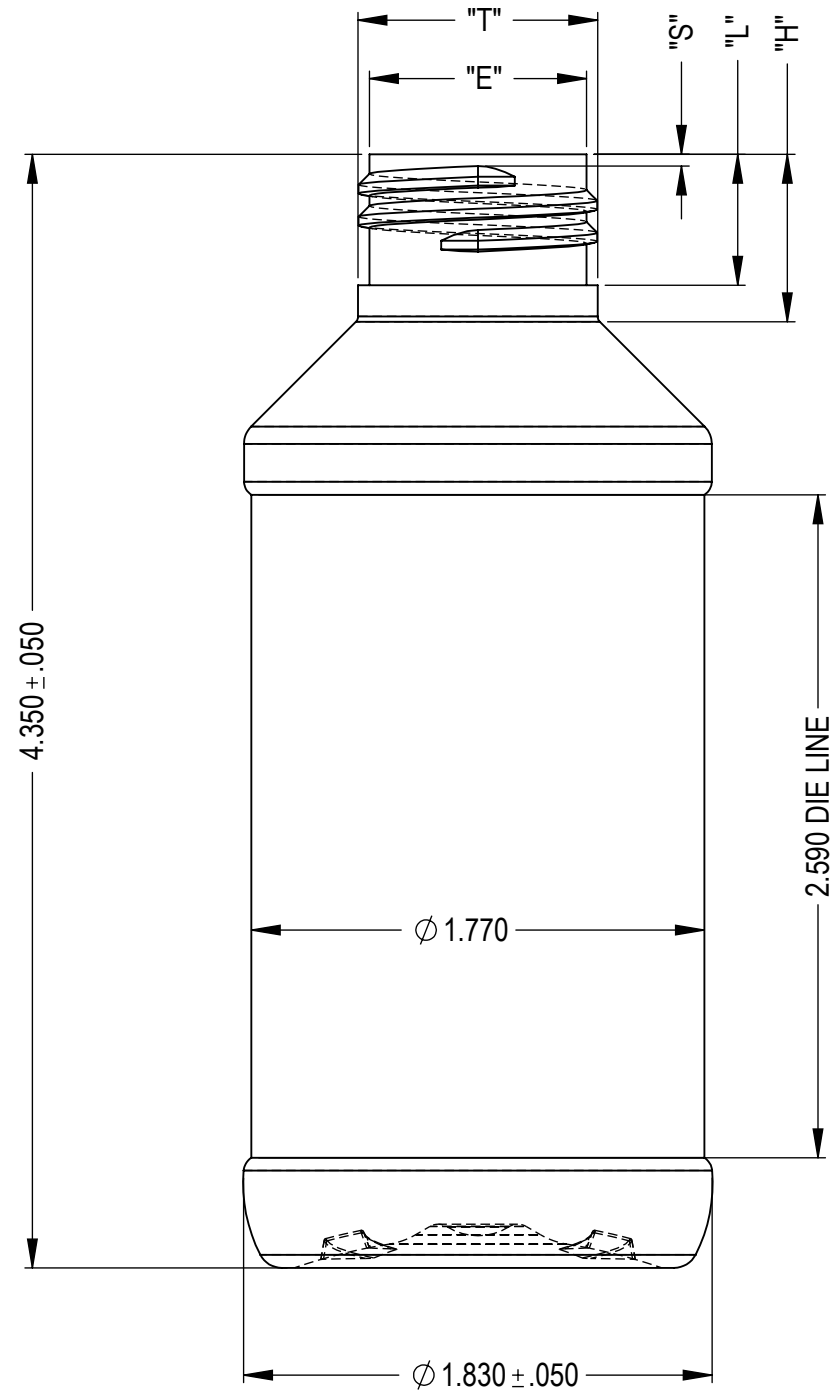


NO.	REV. BY	DESCRIPTION	DATE
△	A.P	GRAM WEIGHT 15 G WAS 13 G	12 MAR 2025



NOTE;
 -- ALL DIMENSIONS ARE TO BE IN INCHES UNLESS SPECIFIED.
 -- ALL RADS & FILLETS ARE 1/64 R. MIN. UNLESS OTHERWISE SPECIFIED.
 -- ALL DIMENSION & FILL CAPACITIES CONFORM TO S.P.I. STANDARDS.

- BODY SIZES SHOWN ARE REPRESENTATIVE OF MEAN DIMENSIONS ONLY. FINAL PRODUCT SIZES ARE TO BE DETERMINED FROM ACTUAL PLASTIC SAMPLES.
- ALL DIMENSIONS AND TOLERANCES CONFORM TO S.P.I. STANDARDS WHERE APPLICABLE.
- THIS DRAWING MAY NOT BE REPRODUCED IN ANY FORM, FOR ANY PURPOSE, UNLESS WRITTEN CONSENT IS GIVEN BY BLOW MOULD ENGINEERING.
- BLOW MOULD ENGINEERING WILL NOT BE RESPONSIBLE FOR THE FUNCTIONALITY OF THE PART. ALL DRAWINGS MUST BE APPROVED BY THE CUSTOMER BEFORE PRODUCTION OF THE MOULD BEGINS.

BOTTLE SPECIFICATIONS			
MATERIAL: PETE	FILL CAPACITY: 118 ML ± 5ML		
WEIGHT: 15g ± 1g	O/F CAPACITY: 137 ML ± 5ML		
NECK SPECIFICATIONS			
FINISH	M24 SP410	"L" DIM.	.512
STYLE	M	"W" DIM.	N/A
"T" DIM.	∅ .932 ± .008	HELIX ANG.	3°7'
"E" DIM.	∅ .848 ± .008	T.P.I	8
"I" DIM.	∅ .578	PINCH	.125
BEAD DIA.	N/A	CUTTER DIA.	.375
"H" DIM.	.646 ± .015	THREAD TURNS	2
"S" DIM.	.046 ± .015		
BLOW MOULD ENGINEERING			
DWN. BY: A.P	DATE: 12 MAR 2025	DESCRIPTION:	118 ML / 4 OZ MODERN ROUND
APR. BY:	DATE:	DRAWING NO.:	C75-4406-1-1C
SCALE: 1:1			